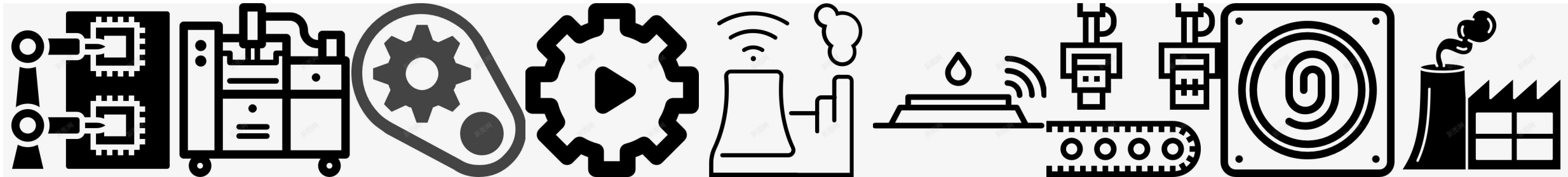


UTL[®]

Focus On Rail Conenctor

Strive to become a leading brand in the industry



Development History



Start terminal
blog

1990

UTL Start

Oversea
business
expand

2001



First plant

Business
expand to
next step

2014



Second
Plant

Involve North
America market

2016



UL Lab

Online business

2018



Shanghai sales
company

Walk out wenzhou
Recruit talent

2021



Kunshan plant

Top 3 in this
business line
2022



Chuzhou Plant



Company basic introduction



1990
start



60000+
m² Area



50+
R&D



100+
Patent



3
Plant



Wenzhou Zhejiang
HQ



20%+
Increment per year



500+
Employee



10000+
SKU



Strategy

Focus

Start with focusing on the terminal block, good cost performance and service bring recognition from customer

Profession

From customer solution to be vertical solution



Extension

From rail terminal block to other connection product requested from customer

Stickiness

customized product for loyal customer to improve the customer stickiness



Location: wenzhou, zhejiang
Area: 16000m²
Manufacturing product line:
Screw terminal block
Push-in terminal block
PCB terminal PCB
Fast connection terminal
Water proof connection

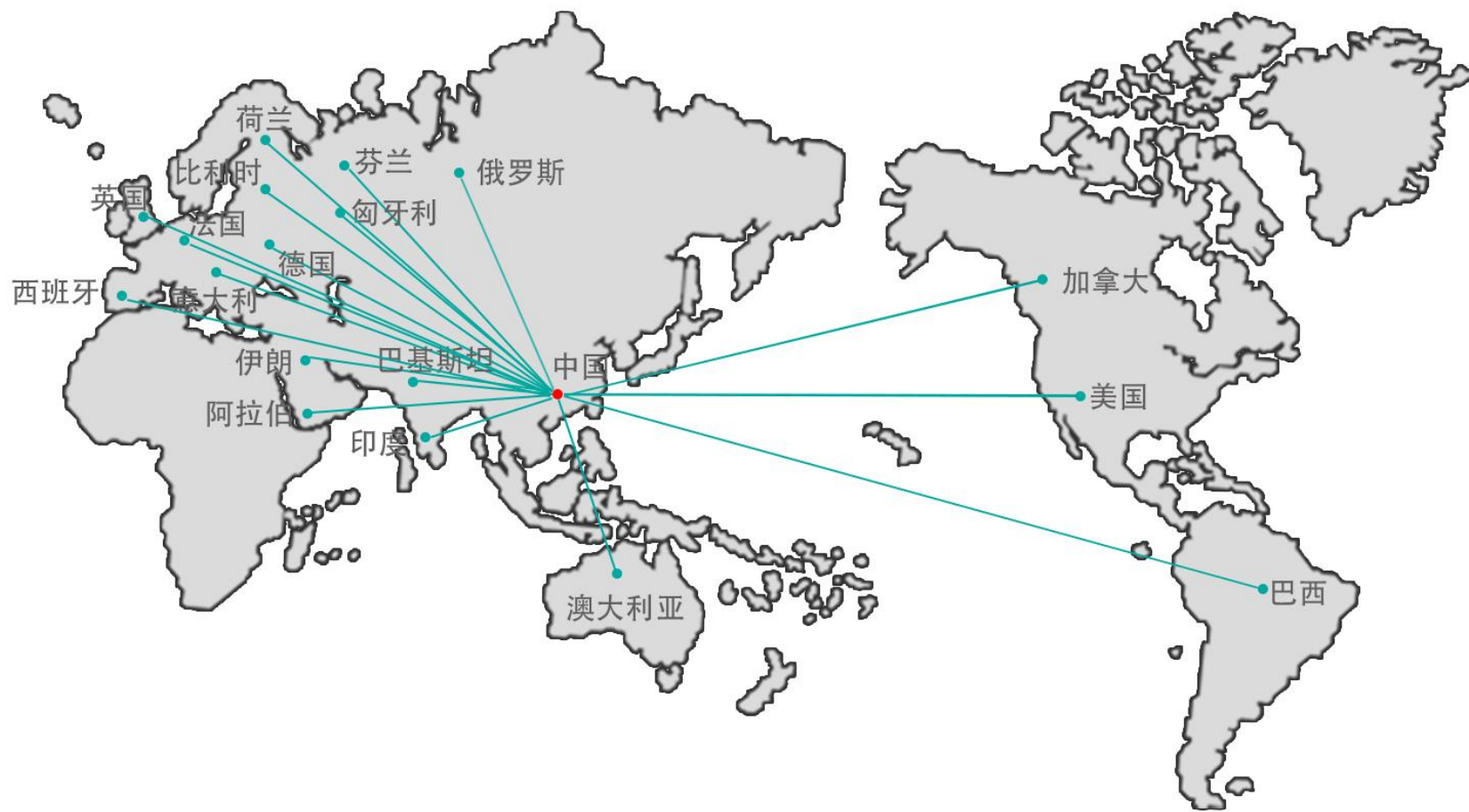


Location: kunshan, Jiangsu
Area: 3000m²
Manufacturing product line:
Push-in terminal block
PCB terminal PCB
Fast connection terminal
Customerized product



Location: Chuzhou, Anhui
Area: 46000m²
Manufacturing product line:
Screw terminal block
Push-in terminal block
PCB terminal PCB
Fast connection terminal
Water proof connection

Business scope



Zhejiang- Wenzhou
HQ



Shanghai, Shenzhen
Globe sales center



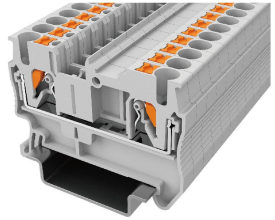
Jiangsu -Kunshan
Local sales office



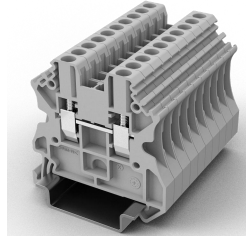
Anhui-chuhzou
Modern plant

Product structure

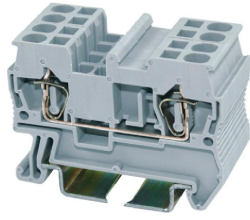
Rail Terminal block



UPT
Push-in
terminal block



UUT
Screw type
terminal block



JUT3
Spring-cage
terminal block



JUT11
Power distribution
terminal block



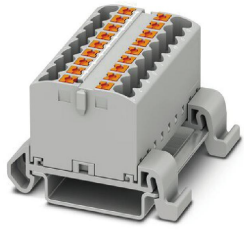
JUT10
Thread type
terminal



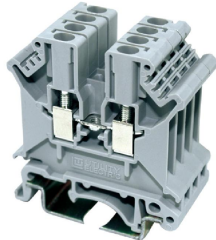
JUT5
Industry distribution
terminal



JUT4
Base type terminal
of industry



JUT15
Power distribution
terminal block



JUT1
Screw type
terminal block



JUT13
Power distribution
terminal block



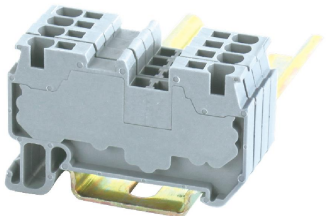
JUT18
Screw type
terminal



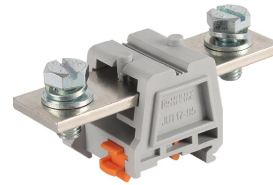
Base type
terminal for
industry



UDB1
Base-type two-bit
terminal



JUT14
Push in
terminal block



JUT17
Power distribution
terminal block

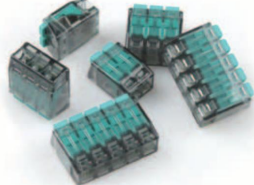


JUT7
Screw combination-
type wiring terminal
row series

Lighting terminal



SMT



UBC-56X



UC41



UBC-59X



UC42

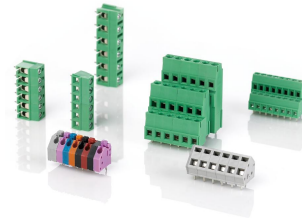


UBC52

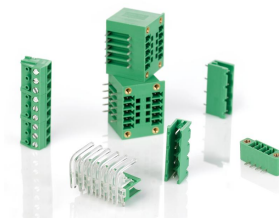


EU2.5

PCB terminal



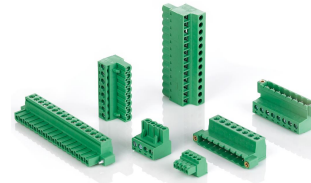
MU range
EU terminal



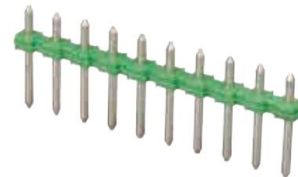
MB range
Plug terminal base



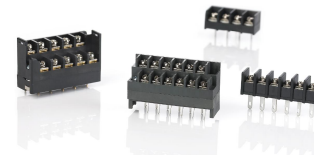
MAP range
Pin plug



MA range
Plug terminal base



MP range
Plug



BU range
US type terminal

Relay



UR21
Ultral thin relay



UR22
Narrow relay



UR23
standrad relay



UR24
High current
relay



UR26
Protection relay



U41F
relay terminal block



U22
Narrow relay
terminal block



U23
standard relay
terminal block



U24
High current relay
terminal block



U26
Protection relay
terminal block

Waterproof connector



Screw
connector
range



Panel range water
proof connector



Double head threaded quick
wiring waterproof connector



"-" type water proof
connector



Double head threaded
waterproof connector

Waterproof box



Aviation connector



Direct docking TP range



Fixed Flange TA range



Rear nut locking connector TF range



Square fixed flange TR range

Heavy duty connector



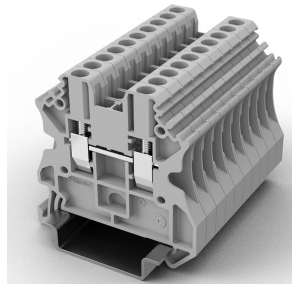
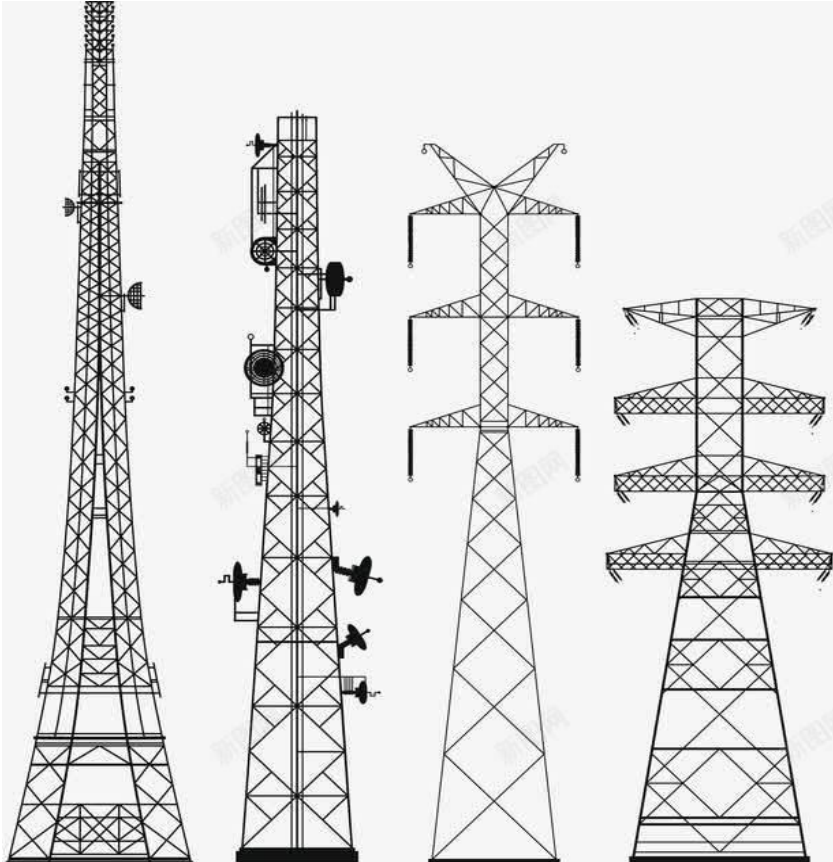
UTL-HE regular plug 500V 16A 16+/24+/32+/48+
screw terminal /Crimp terminal/Cage-clamp



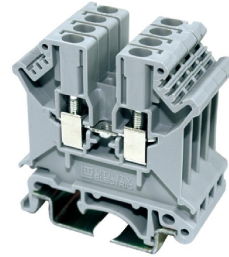
Metal sbox
side output of
upper box

Vertical application

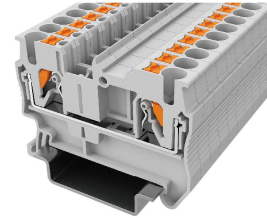
Electricity



UTU



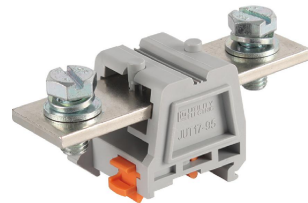
JUT1



UPT



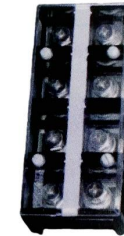
JUT18



JUT17



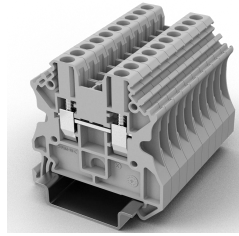
JUT11



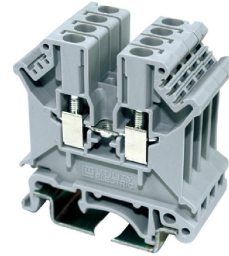
JUT6

Vertical application

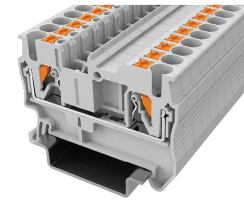
Automation



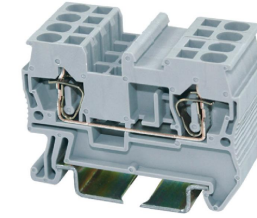
UT



JUT1



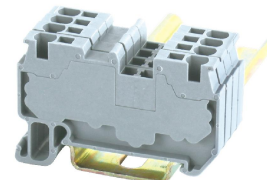
UPT



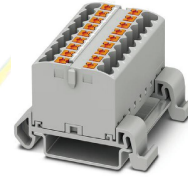
JUT3



UAC



JUT14



JUT15



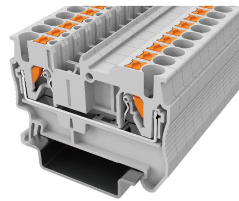
JUT11



Heavy duty connector

Vertical application

Building lighting



UPT



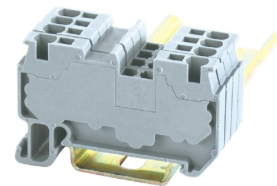
UBC52



UBC-56X



UBC-59X



JUT14



EU2.5



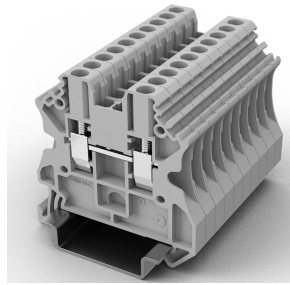
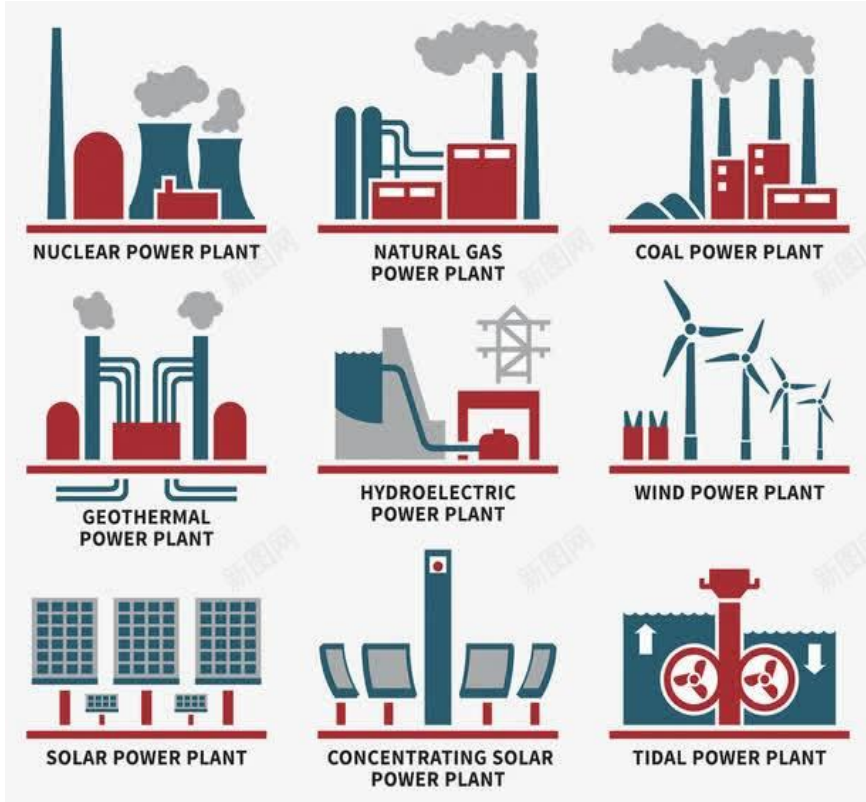
UC



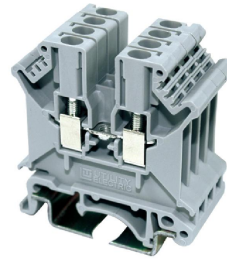
WPC

Vertical application

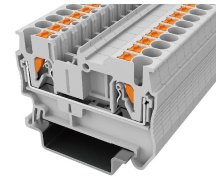
Energy



UUT



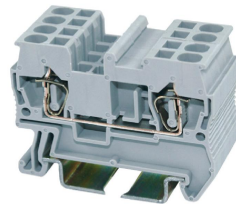
JUT1



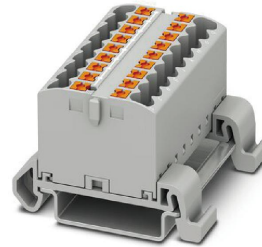
UPT



JUT18



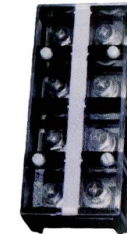
JUT3



JUT15



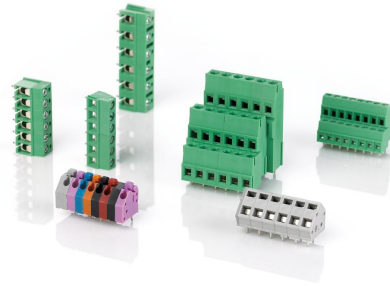
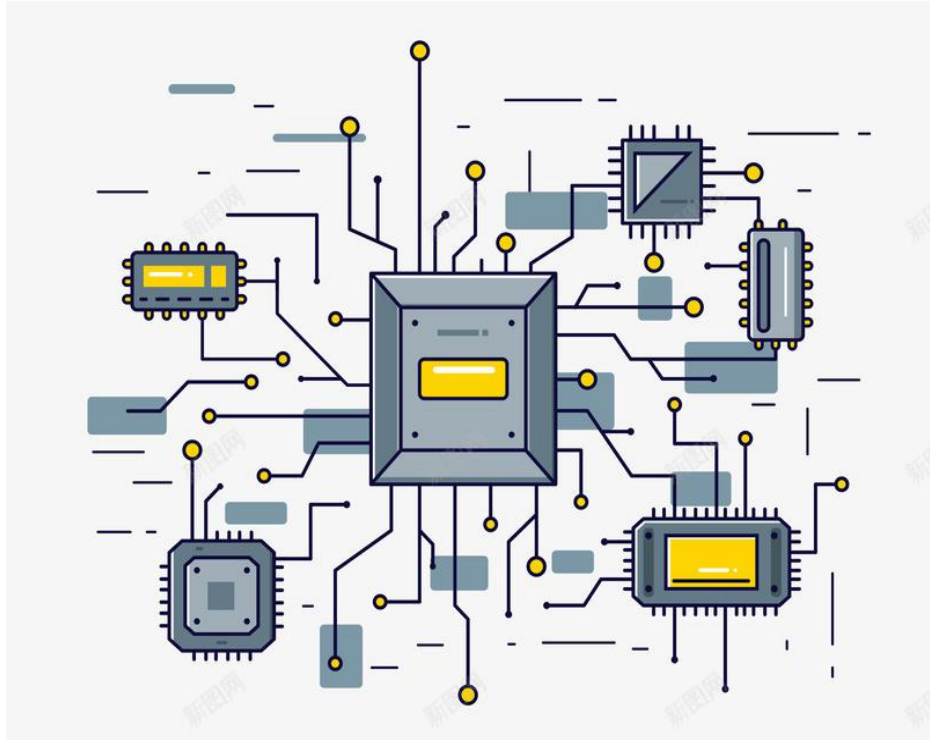
JUT11



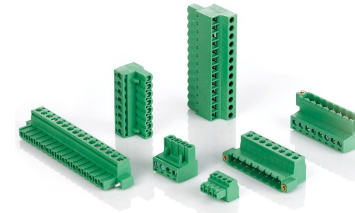
JUT6

Vertical application

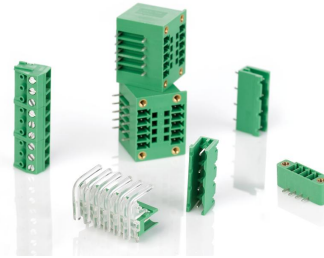
Electronic device



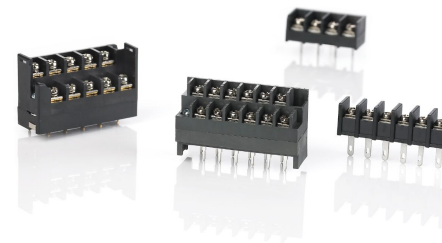
MU



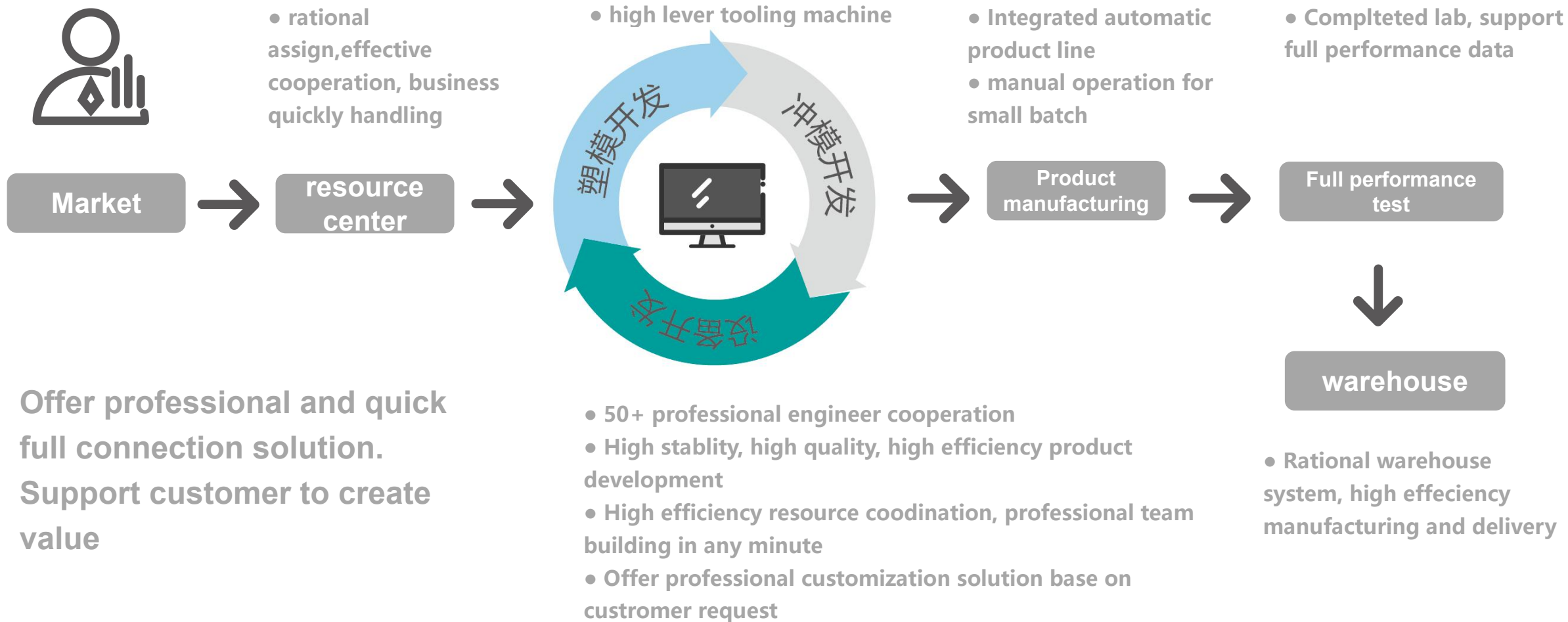
MA



MB



BU



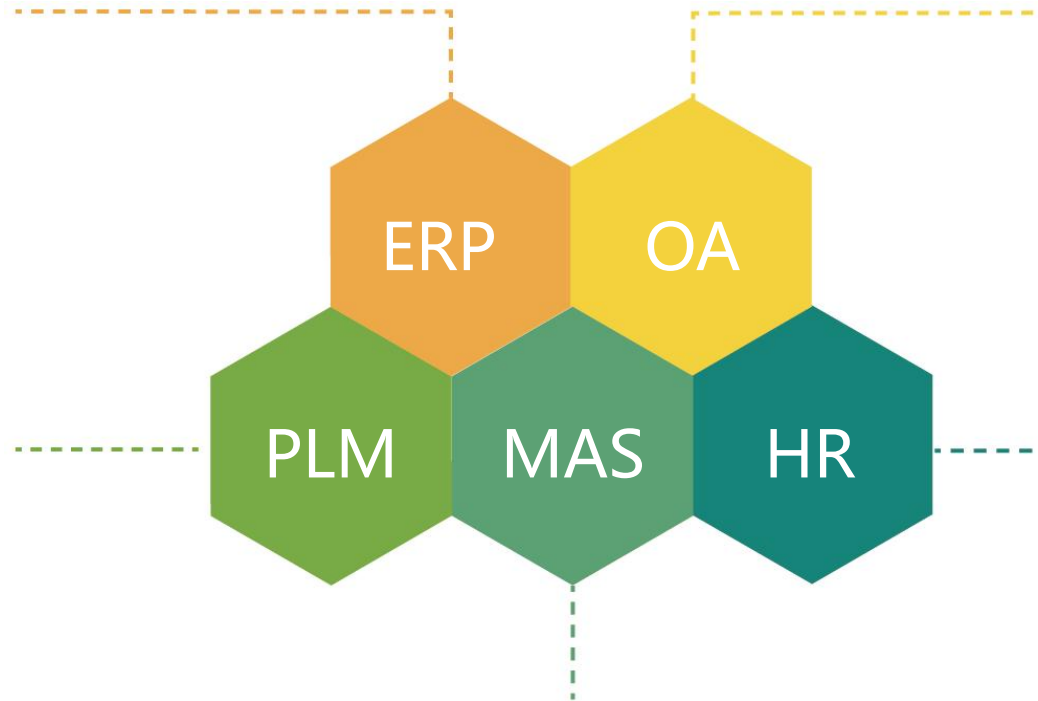
Offer professional and quick full connection solution. Support customer to create value

Digital management

- Optimized company internal process, support company digital transfer development
- Improved internal communication efficiency
- Break through full business chain from product development to manufacturing

ERP (Enterprise Resource Planning)
Detail management from employee to material to improve the efficiency of business operation

PLM (Product Lifecycle Management)
Product lifecycle management platform, support product all relevant information integrated management, design coordination and development.



OA (Office Automation)
Improved cooperation and effective data record

HR (human resource software)
Effective digital HR management, making contribution for company development with new resource

MAS (management system)
Smart managing all relevant equipment, resource, public service, communication system, VDI of buildings.

Product certification



Complete system certification, professional for quality

ISO9001、ISO14001s system certification ; Product with UL、CUL、TUV、VDE、CE、CQC、CCC、ROHS、REACH

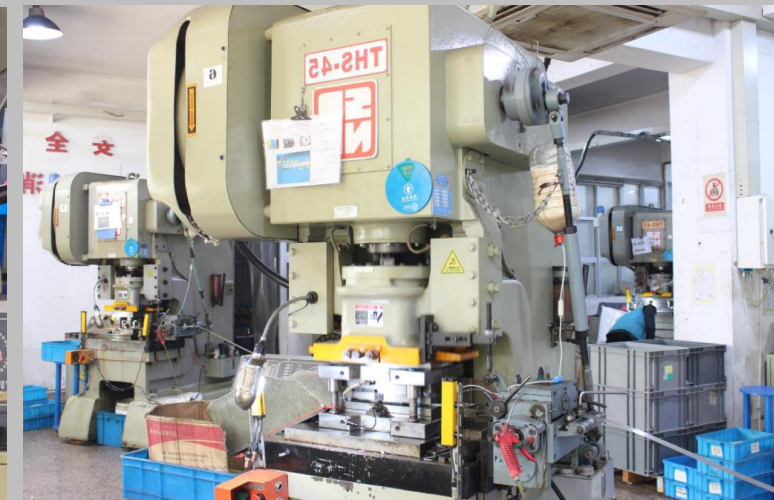


Plastically injection and metal punch

Plastically injection

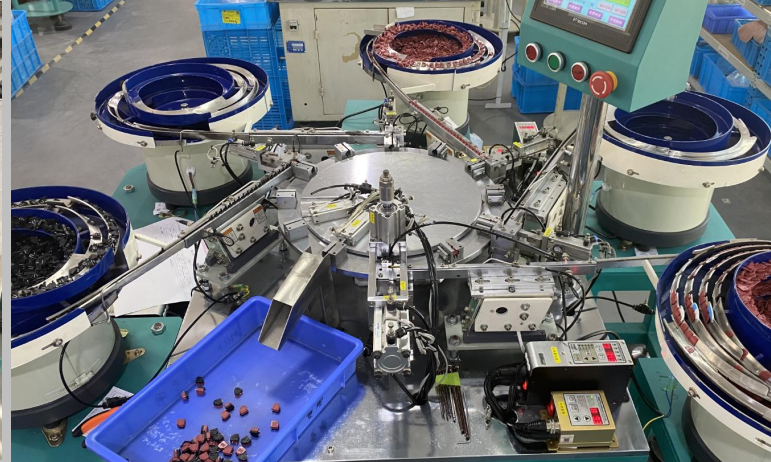


Metal punch



Product assembly

Automatic assembly



Semi-Automatic assembly



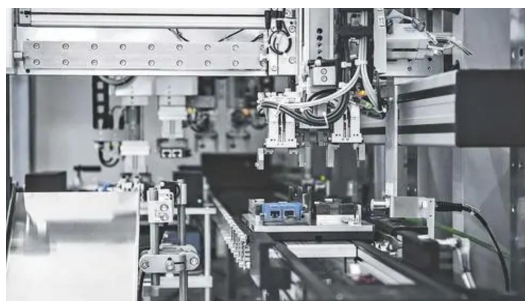
Vertical customer



交通



电力



自动化



Vertical customer



工业控制

APT



星云电子[®]
Nebula Electronics



楼宇照明

HITACHI
Inspire the Next
日立

OSRAM

Honeywell

PHILIPS



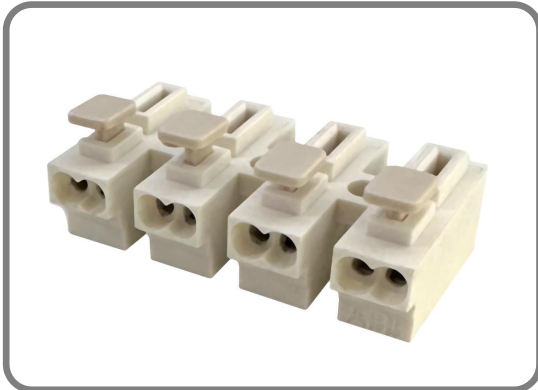
设备



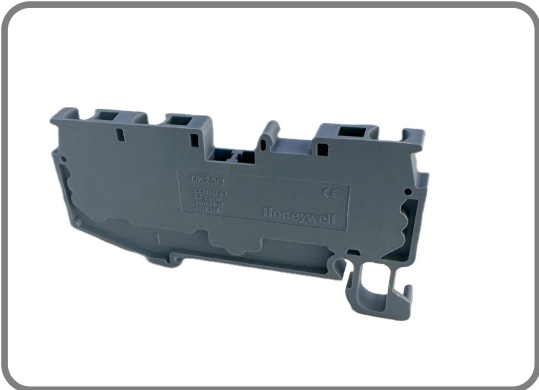
大族激光
HAN'S LASER



Customization



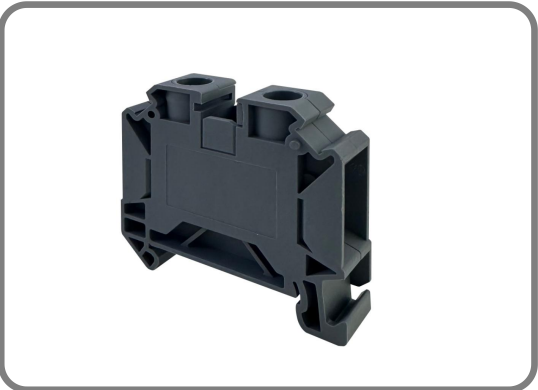
ABB



Honeywell



OSRAM



Klemmsan



HollySys



**中国中车
CRRC**

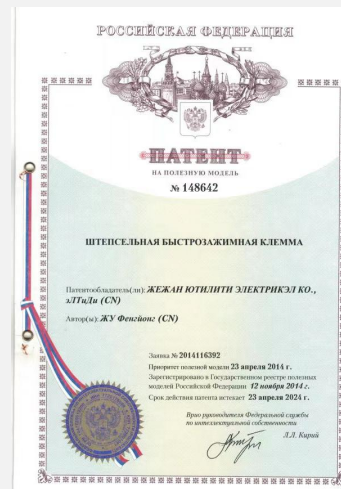
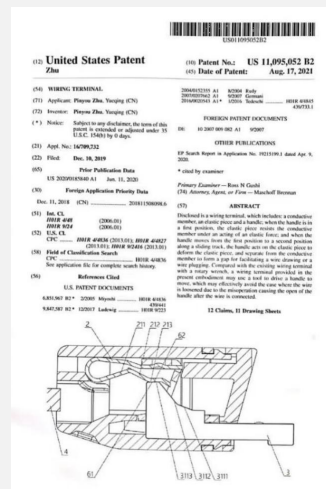
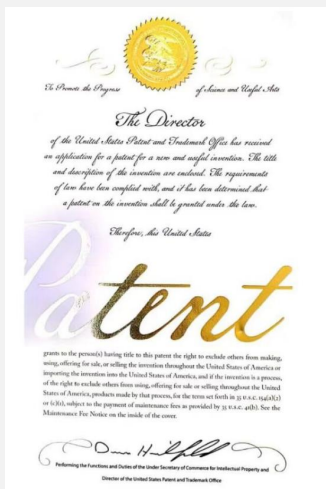


HITACHI
Inspire the Next
日立



Zhejiang technology company
Many Patents for Russia and USA

Product development
and technical engineer
50+ people



Thank You!



扫描二维码获取
更多精彩

UTL (尤提乐)